

CombiBreaker Mini Titan

Low energy consumption – High capacity with a powerful cut!

The **CombiBreaker Mini Titan** is the ultimate hybrid solution for breaking **frozen blocks** or **crushing any kind of bones!**

The **single shaft CombiBreaker Mini Titan** is developed for small to mid-size production equipped with a **11 kW motor as standard**, and 18,5 kW motor as option.

The **smart crushing shaft technology** reduces power consumption and guarantees a nice crushing or breaking cut – with capacity for frozen blocks 3 ton/hour and bones 5 ton/hour (11 kW motor)

The capacity with the optional 18,5 kW motor is **5 ton/hour for blocks** and **9 ton/hour for bones**

The **infeed hopper** is 950 x 700 mm, operation area 800 x 410 mm as standard – other measures are tailor-made upon request.

The **outfeed particle size** is approx. 100 x 80 mm (frozen blocks) and approx. 100 x 50 mm (bones).

For **block thicknesses over 50 mm**, special cutting teeth **dedicated for breaking of blocks** is strongly recommended.

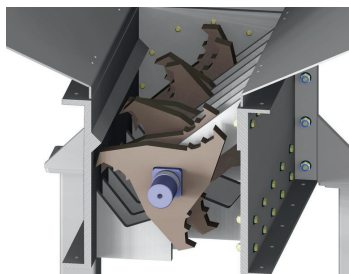
Features / CombiBreaker Mini Titan:

- Very strong and durable design
- Clean and powerful cut
- High efficiency and very high reliability
- High safety fulfilling CE-requirements
- High cleanability
- Low power consumption
- Speed regulation by frequency converter
- All surfaces in contact with the product manufactured in stainless steel AISI304
- Possibility for tailor-made infeed and outfeed if fed by lifter or conveyor

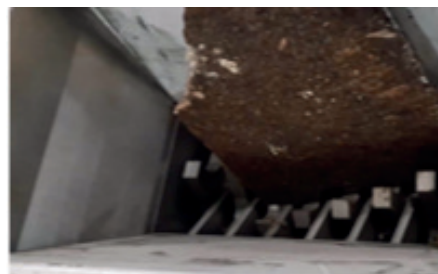
Bones



Dedicated for blocks



Frozen blocks



Technical specification

Dimension:

Length	3300 mm
Width	1300 mm
Height	2760 mm, depending on the type of infeed
Weight	1750 kg
Infeed opening	950 x 700 mm, cutting area 800 x 410 mm

Power transmission and motor:

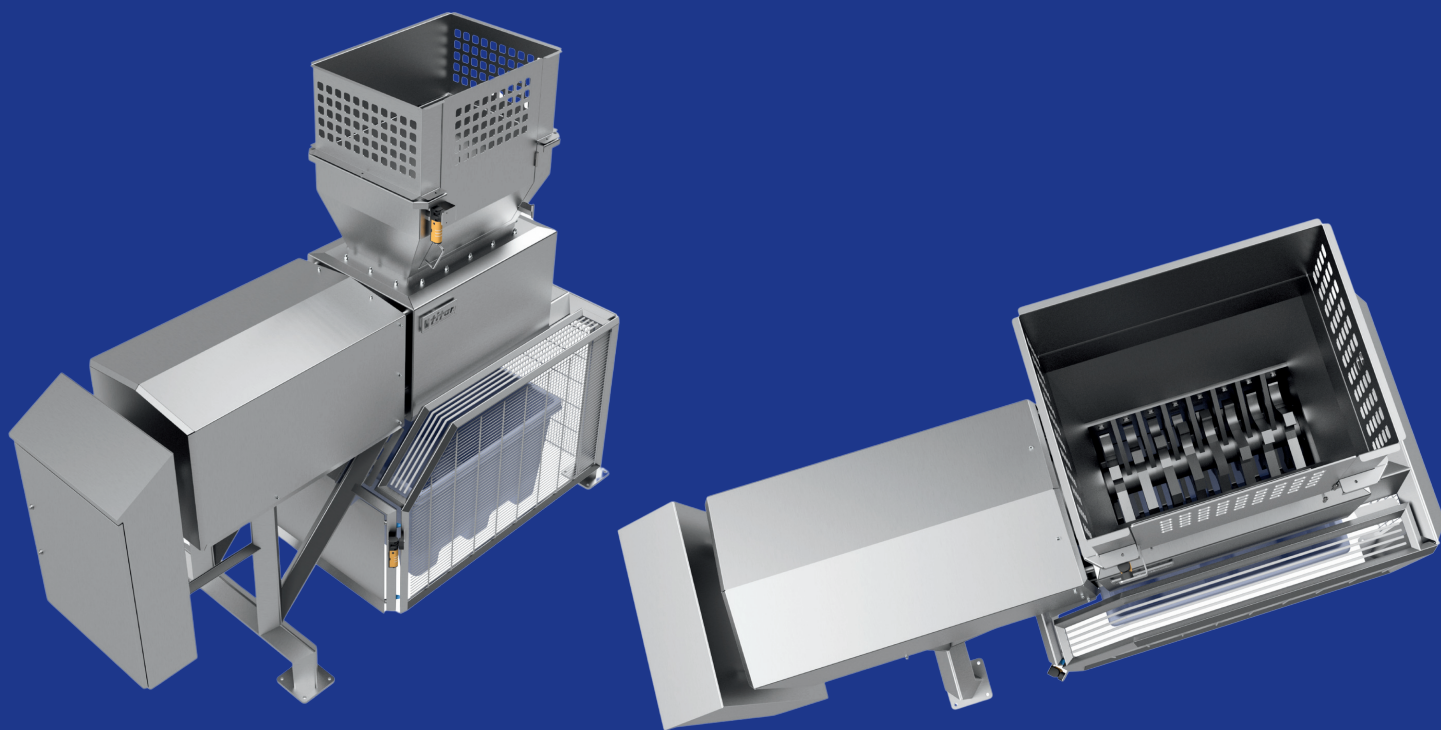
Gearbox	SEW Gear motor 11 kW (standard), 18,5 kW (Option)
Voltage	400 / 690 V, 50 Hz, Frequency controlled
Oil type	Food grade oil
Main shaft speed	11 rpm (Type L 11 kW), 18 rpm (Type XL 18,5 kW)

Control box and safety:

Control box	RITTAL HD 810 x 1050/1221 (1316.600), IP X9
Frequency converter	VACON 100 Industrial 15 kW (22 kW)
Safety relay, switches	SICK
Standstill monitor	
Infeed & Outfeed protection	Hinged, stainless steel frame covers 1 + 1 pcs

Performance:

Cutting teeth	8 pcs. Main shaft counter blade 7 pcs
Max. infeed size	750 x 400 mm
Outfeed particle size	Approx. 100 x 80 mm (block) Approx. 100 x 50 mm (bones)
Output capacity, Type L 11 kW	3 ton/hour blocks, 5 ton/hour bones @ 50 Hz
Output capacity, Type XL 18,5 kW	5 ton/hour blocks, 9 ton/hour bones @ 50 Hz



Low energy consumption – High capacity with a powerful cut!

CombiBreaker Mini Titan